

FORM.  
FUNCTION.  
REDESIGNED.



 **DAIKIN**  
emura

# DISCOVER A NEW WORLD OF INTERIOR DESIGN /



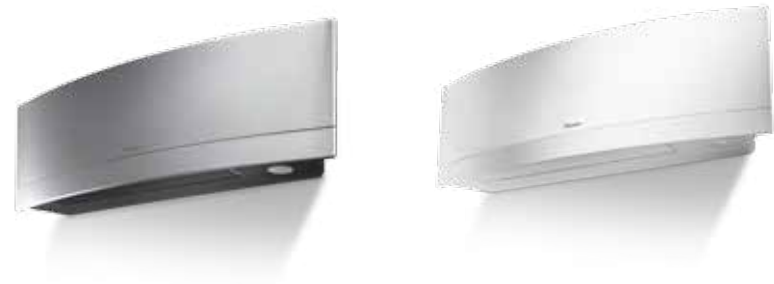
*"Daikin Emura was designed to perfectly balance technological leadership and the beauty of aerodynamics."*

Alexander Schlag,  
Managing Director at yellow design gmbh

yellow design gmbh || | | |

## IT'S ALL ABOUT DESIGN

DESIGN IS EVERYTHING. IT IS IN THE CHOICE OF CREATING SLEEK, ELEGANT CLIMATE CONTROL THAT LOOKS GREAT. IT'S ALSO IN THE CHOICE OF SMART TECHNOLOGY THAT ENSURES COMFORTABLE INTERIORS AT ALL TIMES.



## DESIGNED IN EUROPE FOR EUROPE

The Daikin Emura is the result of ongoing research into creating superior air conditioning solutions for European interiors. The first Daikin Emura was released in 2010 and the split system wall-mounted air conditioner redefined the notion of climate control in European interior design. The new generation adds even greater functionality, making it ever more relevant to the European architectural aesthetics, technical standards and user demands.



**Design**  
AT ITS BEST

## THE NEW DAIKIN EMURA - AN ICON OF CONTEMPORARY CLIMATE CONTROL

Daikin Emura once again proves that intelligent design can look great and deliver superior energy efficiency in climate control. So the indoor environment is optimised and architects, engineers and home owners get the ideal solution.

Air-to-air heat pumps extract 80% of their output energy from a surprising renewable source: ambient air, effectively transferring existing heat. High energy efficiency is obtained by using advanced energy-saving technologies such as re-designed swing compressors.

### FEATURES

- Stylish finish in silver, anthracite or pure matt white
- SEER up to **A+++**
- Whisper quiet sound levels, down to 19dB(A)
- Ensures maximum comfort in every situation
- Wide operating range: -10 to 46°C for cooling and -15 to 20°C for heating
- Can be controlled remotely



## Efficient & SMART

- Curved front panel
- Sleek, elegant appearance
- Smooth operation
- Intelligent sensors for optimal performance
- Large flaps as key design element



**Comfort**  
YEAR ROUND



## DAIKIN EMURA IS A HIGHLY INTELLIGENT SYSTEM WITH INNOVATIVE FEATURES

### Fresh air

A sophisticated titanium apatite photo-catalytic air purification filter traps even microscopic airborne dust particles, absorbs organic contaminants such as bacteria and viruses and even breaks down odours.

### 3D air flow

To ensure a harmonised temperature throughout the room, the Daikin Emura's 3D air flow system combines vertical and horizontal auto-swing creating an even distribution of air throughout the room to the corners of even large spaces.

### Comfort mode

Draught-free operation improves comfort. When cooling, the flap positions itself horizontally to prevent cold airflow from being blown directly onto the body. When heating, the flap turns vertically downwards to drive warm air to the bottom of the room.



WHISPER QUIET  
DOWN TO 19 dB(A)

### Intelligent eye

The two-area intelligent eye sensor controls comfort in two ways. If the room is empty for 20 minutes, it changes the set point to start saving energy. As soon as someone enters the room, it immediately returns to the original setting. The intelligent eye also directs air flow away from people in the room to avoid cold draughts.

### Night set mode

Rapid changes in room temperature can disturb your sleep. To avoid this, Daikin Emura prevents overheating or overcooling during the night. If the timer is switched on, the unit will automatically set the temperature to 0.5°C warmer when cooling and to 2°C cooler when warming.

**Absolute**  
CONTROL



## EASY CONTROL FROM EVERYWHERE

The easy-to-use remote unit gives you absolute control of the room temperature from wherever you are. Sit back, check the large display and put all of Daikin Emura's built-in intelligence to work through user-friendly buttons.

## SMART WIFI / SMART ENERGY SAVING

The plug-and-play extra Wi-Fi device allows you to set and even schedule the temperature from anywhere, using Apple or Android systems. So you can manage the unit when away from home, offering optimal climate control while saving energy.

## DISCOVER A NEW WORLD /





# COOLING & HEATING

Indoor unit			*FTXG20LW/S	*FTXG25LW/S	*FTXG35LW/S	*FTXG50LW/S	
Cooling capacity	Min./Nom./Max.	kW	1.3/2.0/2.8	1.3/2.5/3.0	1.4/3.5/3.8	1.7/5.0/5.3	
Heating capacity	Min./Nom./Max.	kW	1.3/2.5/4.3	1.3/3.4/4.5	1.4/4.0/5.0	1.7/5.8/6.5	
Power input	Cooling	Nom.	0.41	0.55	0.88	1.47	
	Heating	Nom.	0.50	0.77	0.98	1.59	
Seasonal efficiency (according to EN14825)	Cooling	Energy label	A+++		A++		
		Pdesign	kW	2.00	2.50	3.50	5.00
		SEER		8.52	8.57	7.41	6.69
	Heating (Average climate)	Annual energy consumption	kWh	82	102	165	262
		Energy label		A++		A+	
		Pdesign	kW	2.30	2.80	3.30	4.60
		SCOP		4.71	4.70	4.60	4.24
Nominal efficiency (cooling at 35°/27° nominal load, heating at 7°/20° nominal load)	EER		4.88	4.55	3.98	3.40	
	COP		5.00	4.42	4.08	3.65	
	Annual energy consumption	kWh	205	275	440	735	
Casing	Energy label	Cooling/Heating	A/A				
	Colour		White				
Dimensions	Unit	HeightxWidthxDepth	mm				
Weight	Unit		kg				
Fan - Air flow rate	Cooling	High	8.8		11	11.3	
	Heating	High	10.1	10.4	11.7	12.3	
Sound power level	Cooling	High	54		59	60	
	Heating	High	56	57	59	60	
Sound pressure level	Cooling	High/Nom./Low/Silent operation	38/32/25/19		45/34/26/20	46/40/35/32	
	Heating	High/Nom./Low/Silent operation	40/34/28/19	41/34/28/19	45/37/29/20	47/41/35/32	
Piping connections	Liquid	OD	6.35				
	Gas	OD	9.5		12.7		
Power supply	Phase / Frequency / Voltage	Hz / V	1~ / 50 / 220-240				

Outdoor unit			*RXG20L	*RXG25L	*RXG35L	*RXG50L
Dimensions	Unit	HeightxWidthxDepth	550x765x300		735x825x315	
Weight	Unit		kg		48	
Sound power level	Cooling	High	61		63	
	Heating	High	46/43		48/44	
Sound pressure level	Cooling	High/Low	47/44		48/45	
	Heating	High/Low				
Operation range	Cooling	Ambient Min.-Max.	°CDB		-10~46	
	Heating	Ambient Min.-Max.	°CWB		-15~20	
Refrigerant	Type/GWP		R-410A/1,975			
Piping connections	Piping length	OU - IU Max.	m		30	
	Level difference	IU - OU Max.	m		20	
Power supply	Phase / Frequency / Voltage	Hz / V	1~ / 50 / 220-240			
Current - 50Hz	Maximum fuse amps (MFA)	A	16		20	

(1) EER/COP according to Eurovent 2012. \*Note: grey cells contain preliminary data.

## MULTI COMBINATION TABLE

POSSIBLE COMBINATIONS	2MXS40H	2MXS50H	3MXS40K	3MXS52E	3MXS68G	4MXS68F	4MXS80E	5MXS90E	RXY5Q-PBVT
Maximum number of indoor units	2	2	2	3	3	4	4	5	6
FTXG20LW/S	•	•	•	•	•	•	•	•	•
FTXG25LW/S	•	•	•	•	•	•	•	•	•
FTXG35LW/S	•	•	•	•	•	•	•	•	•
FTXG50LW/S	•	•	•	•	•	•	•	•	•



DAIKIN EMURA.  
THE NEXT  
GENERATION  
AIR CONDITIONER.



DAIKIN

The present leaflet is drawn up by way of information only and does not constitute an offer binding upon Daikin Europe N.V. Daikin Europe N.V. has compiled the content of this leaflet to the best of its knowledge. No express or implied warranty is given for the completeness, accuracy, reliability or fitness for particular purpose of its content and the products and services presented therein. Specifications are subject to change without prior notice. Daikin Europe N.V. explicitly rejects any liability for any direct or indirect damage, in the broadest sense, arising from or related to the use and/or interpretation of this leaflet. All content is copyrighted by Daikin Europe N.V.



Daikin Europe N.V. participates in the Eurovent Certification programme for Liquid Chilling Packages (LCP) and Fan coil units (Fcu), check ongoing validity of certificate online: [www.eurovent-certification.com](http://www.eurovent-certification.com) or using: [www.certiflash.com](http://www.certiflash.com)

Daikin products are distributed by:



ECPEN14-003\_P • 500 • 11/13 • Copyright Daikin •  
The present publication supersedes ECPEN13-003  
Printed on non-chlorinated paper. Prepared by  
Liquid Society, Belgium • Resp. Ed.: Daikin Europe N.V.,  
Zandvoordestraat 300, B-8400 Oostende

